



NebuLite

Lighting with Innovations



NebuLite Technology Inc., as a leading LED Lighting brand, is dedicated to design and manufacture LED lighting fixtures with stylish aesthetic appearance and impressive outstanding features. NebuLite believes that LED should be more than just energy saving.

All NebuLite fixtures are designed with NebuLiteActiveCooling thermal engineering that maximizes luminaire performance and meanwhile keeps the luminaire low profile sleek. Combined with brand LM80 LED, NebuLite luminaires will serve for many years and stay stylish.

Apart from fixture design, NebuLite also created its SmartEye lighting control system that help contractor meet the most recent energy code like California Title 24. We also supply desirable excessive optic options for all of our products, meeting all lighting designer needs.

NebuLite fixtures are well certified with DLC and UL/ETL and compliant with California Title 24. With instant support like professional lighting layout design, ROI calculation and utility rebate program consulting, NebuLite are best choice for all LED lighting projects. In the past decade NebuLite has set up worldwide project portfolio in North America, Germany, UK, Japan, etc.

With NebuLite, you combine LED lighting with technology and innovations.

13905 Magnolia Ave, Chino, CA 91710

Tel: (818) 573-7826

Email: info@nebulite.com

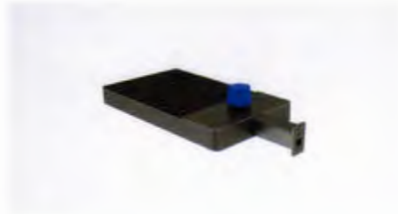


Nebula LED Area Light

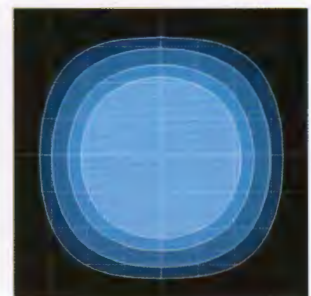
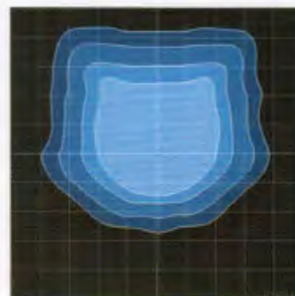
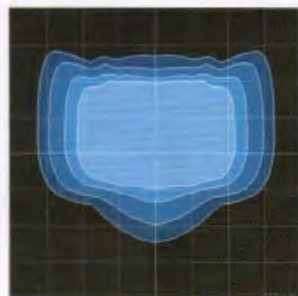
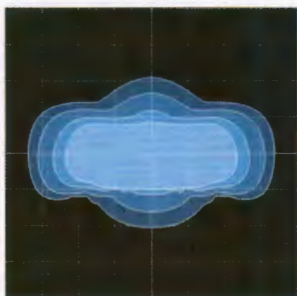


Key Features

- High efficacy 105lm/W
- House side shield available
- IES Type II, III, IV and V distribution
- Available from 50W to 300W, up to 31,500lm
- Full CCT range available from 3000K to 5000K
- NEMA twist-lock photocell and receptacle available
- Bi-Level occupancy sensor with wireless app control
- Mesh Network site control with intelligent control system
- Sufficient mounting options covering pole, flood and wall mount
- Stylish low profile body that minimizes wind load and retains aesthetic pleasing appearance



Family Model	Lumens	Wattage	lm/W	CCT	CRI	PF	THD	L70
NBAL-50W	5,200lm	50W	105lm/W	3000K-5000K	75+	>0.93	<15%	>100,000h
NBAL-80W	8,400lm	80W	105lm/W	3000K-5000K	75+	>0.93	<15%	>100,000h
NBAL-100W	10,500lm	100W	105lm/W	3000K-5000K	75+	>0.93	<15%	>100,000h
NBAL-150W	12,700lm	150W	105lm/W	3000K-5000K	75+	>0.93	<15%	>100,000h
NBAL-200W	21,000lm	200W	105lm/W	3000K-5000K	75+	>0.93	<15%	>100,000h
NBAL-300W	31,500lm	300W	105lm/W	3000K-5000K	75+	>0.93	<15%	>100,000h



www.nebulite.com

Authorized Distributor
BDT Energy Group, Inc.

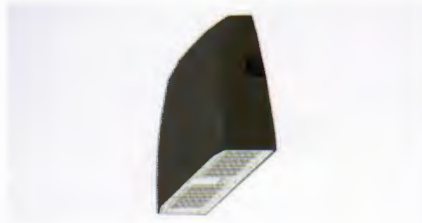
(800)325-0380 support@bdtenergygroup.com
www.bdtenergygroup.com

WPS LED Wall Pack

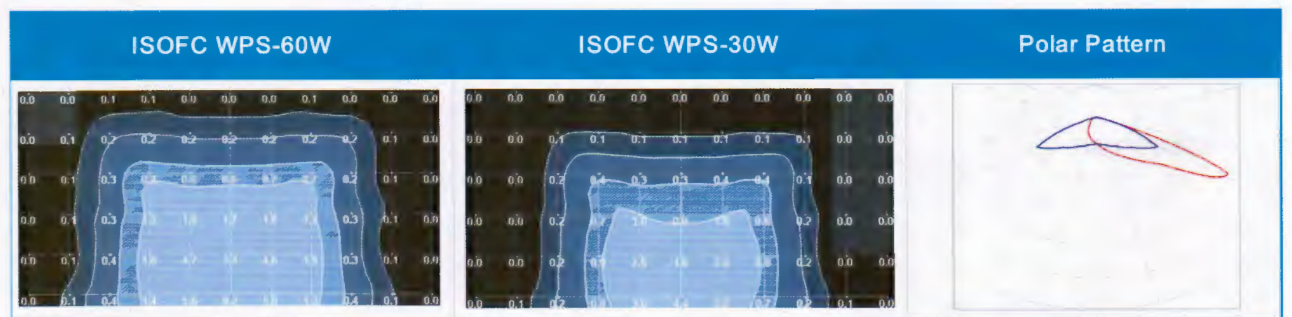


Key Features

- High efficacy up to 105lm/W
- Incredible 80% forward-throw light
- Available with 30W and 60W, up to 6,300lm
- Full CCT range available from 3000K to 5000K
- SmartEye Concealed microwave occupancy sensor
- IES Type IV optic that made of UV resistant polycarbonate
- Super low profile slim cast alloy housing with integral cooling fins
- Low profile light weight extrusion heatsink with integral heat-tube



Family Model	Lumens	Wattage	lm/W	CCT	CRI	PF	THD	L70
WPS-30W	3,150lm	30W	105lm/W	3000K-5000K	75+	>0.93	<13%	100,000h
WPS-60W	6,300lm	60W	105lm/W	3000K-5000K	75+	>0.93	<13%	100,000h



iLnear LED High Bay



Key Features

- High efficacy 110lm/W
- House side shield available
- NEMA 7x7 wide beam and glare free
- Full CCT range available from 3000K to 5000K
- Available from 100W to 320W, up to 35,000lm
- Bi-Level occupancy sensor with wireless app control
- Lightweight aluminum heatsink with air convection cooling
- High Efficiency LED Board with dual copper cladding for heat dissipation



Family Model	Lumens	Wattage	lm/W	CCT	CRI	PF	THD	L70
LHB-100W	11,000lm	100W	110lm/W	3000K-5000K	80+	>0.9	<15%	>100,000h
LHB-160W	17,600lm	160W	110lm/W	3000K-5000K	80+	>0.9	<15%	>100,000h
LHB-240W	26,400lm	240W	110lm/W	3000K-5000K	80+	>0.9	<15%	>100,000h
LHB-320W	35,200lm	320W	110lm/W	3000K-5000K	80+	>0.9	<15%	>100,000h

ILLUMINANCE AT A DISTANCE

Mounting Height FT	Center Footcandle				Polar Graph
	100W	160W	240W	320W	
4FT	226FC	362FC	543FC	724FC	
8FT	57FC	91FC	136FC	181FC	
12FT	25FC	40FC	60FC	80FC	
16FT	14FC	23FC	34FC	45FC	
20FT	9FC	15FC	22FC	29FC	
24FT	6FC	10FC	15FC	20FC	
Beam Angel	120° NEMA 7X7				



NOVA LED Bay



Key Features

- High efficacy up to 100lm/W
- IP65 rated for wet locations
- From 50W to 200W, up to 18,500lm
- Full CCT range available from 3000K to 5000K
- Compact one-piece die cast aluminum housing
- Patented pendant-hook adaptor for easy mounting
- On-chip narrow beam optic optional for warehouse aisle
- On-chip super wide beam optic optional for parking garage



Family Model	Lumens	Wattage	lm/W	CCT	CRI	PF	THD	L70
NVHB-50W	5,000lm	50W	100lm/W	3000K-5000K	75+	>0.9	<15%	>100,000h
NVHB-80W	8,000lm	80W	100lm/W	3000K-5000K	75+	>0.9	<15%	>100,000h
NVHB-150W	15,000lm	150W	100lm/W	3000K-5000K	75+	>0.9	<15%	>100,000h
NVHB-200W	18,500lm	200W	92lm/W	3000K-5000K	75+	>0.9	<15%	>100,000h

ILLUMINANCE AT A DISTANCE

Reflector Type	Frosted Dome (Standard)				Narrow Beam Optic (Optional)				Wide Beam Optic (Optional)			
Polar Distribution Graph												
Mounting Height FT	Center Footcandle				Center Footcandle				Center Footcandle			
	50W	80W	150W	200W	50W	80W	150W	200W	50W	80W	150W	200W
4FT	108FC	173FC	325FC	433FC	143FC	229FC	429FC	572FC	58FC	92FC	173FC	230FC
8FT	27FC	43FC	81FC	108FC	45FC	72FC	135FC	181FC	14FC	23FC	43FC	58FC
12FT	12FC	19FC	36FC	48FC	20FC	32FC	60FC	80FC	6FC	10FC	19FC	26FC
16FT	7FC	11FC	20FC	27FC	11FC	18FC	34FC	45FC	4FC	6FC	11FC	14FC
20FT	4FC	7FC	13FC	17FC	7FC	12FC	22FC	29FC	2FC	4FC	7FC	9FC
24FT	3FC	5FC	9FC	12FC	5FC	8FC	15FC	20FC	2FC	3FC	5FC	6FC
Beam Angel	110° or NEMA 7x7				80° or NEMA 6x6				140° or NEMA 7x7			



EVO LED High Bay



Key Features

- High efficacy up to 110lm/W
- IP65 rated for wet locations
- From 150W to 320W, up to 33,600lm
- Full CCT range available from 3000K to 5000K
- Patented pendant-hook adaptor for easy mounting
- Exclusive driver compartment cooling design
- Low profile light weight extrusion heatsink with integral heat-tube
- Designed to work in high ambient temperature
- 23 inch UV resistant polycarbonate reflector or wide beam aluminum reflector



Family Model	Lumens	Wattage	lm/W	CCT	CRI	PF	THD	L70
HBB-150W	16,500lm	150W	110lm/W	3000K-5000K	75+	>0.9	<15%	>100,000h
HBB-200W	21,000lm	200W	105lm/W	3000K-5000K	75+	>0.9	<15%	>100,000h
HBB-320W	33,600lm	320W	105lm/W	3000K-5000K	75+	>0.9	<15%	>100,000h

ILLUMINANCE AT A DISTANCE

Reflector Type	PC Reflector			AL Reflector			No Reflector		
Polar Distribution Chart									
Mounting Height FT	Center Footcandle			Center Footcandle			Center Footcandle		
	HBB-150W	HBB-200W	HBB-320W	HBB-150W	HBB-200W	HBB-320W	HBB-150W	HBB-200W	HBB-320W
4FT	799FC	1071FC	1702FC	382FC	509FC	815FC	324FC	432	691FC
8FT	200FC	268FC	426FC	96FC	127FC	204FC	81FC	108FC	173FC
12FT	89FC	119FC	189FC	42FC	57FC	90FC	36FC	48FC	77FC
16FT	50FC	67FC	106FC	24FC	32FC	51FC	20FC	27FC	43FC
20FT	32FC	43FC	68FC	15FC	20FC	33FC	13FC	17FC	28FC
24FT	22FC	30FC	47FC	11FC	14FC	23FC	9FC	12FC	19FC
Beam Angel	55°			110°			120°		